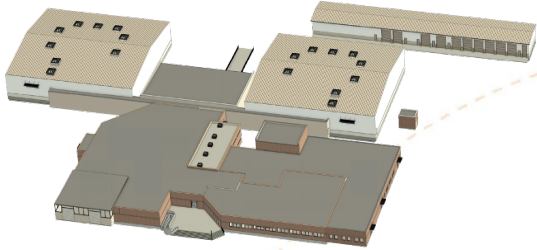




OKEECHOBEE COUNTY

SHERIFF'S OFFICE & JAIL ADDITION AND RENOVATION



After more than 13 years of attempting to define and address its sheriff's office and detention space needs, the County elected officials came together in support of a comprehensive addition and renovation project.

PROJECT APPROACH

- A nine-month intensive Pre-Design / Project Definition phase was launched to analyze the County's Justice System, determine Justice System needs for the next 20 years, investigate several design options, develop construction and project costs, lifecycle costs, and staffing and operational budgets.
- Securitecture developed 5 new construction options, and 16 renovation and addition options. After the County selected a preferred option, Securitecture developed detailed construction costs and project costs, and staffing and operational budgets for 7 different implementation strategies of the preferred option.
- New, larger, 224-bed housing pods with 2 classrooms and an indoor/outdoor recreation area within the pod replaced the existing antiquated, non-compliant housing pods. This approach formed the foundation of the new design concept.

RESULT

- A 181,411 square-foot renovation and addition solution was developed accommodating 20- to 40-year needs while improving every area of the facility.
- Capacity of the jail was more than doubled from 231 beds to 492 beds, without adding a single staff position!
- Modular and industrial construction methods and materials were utilized to reduce construction costs and yet meet local hurricane code wind loads.
- Future expansion capabilities were preserved on the existing downtown site.

CLIENT

Okeechobee County Board of Commissioners
Okeechobee, Florida

PROJECT ROLES

Principal in Charge, Architect of Record, Lead Designer and Detention/Security Consultant

PROJECT TEAM

Securitecture, LLC; Byce; OCI; BBM; Dobbs; IFD; Ajax

KEY ACCOMPLISHMENTS

Solved the County's 20-40 year Corrections and Law Enforcement needs through a comprehensive Addition and Renovation project.